

SIEMENS
energy

Proven by our experts, ready for yours

Omnivise Maintenance

Digitally transform and improve
your maintenance processes

siemens-energy.com



Omnivise Maintenance

Are you looking for more effective maintenance processes as staff numbers decrease and budget pressures grow?

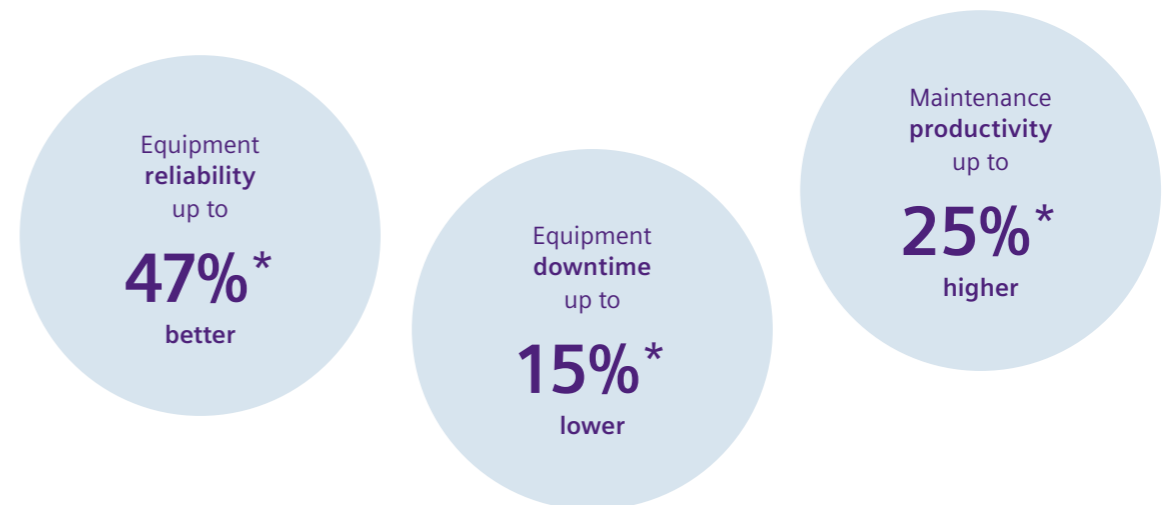
Do you want to reduce your downtime through more systematic planning and insights?

Would you like to achieve higher levels of flexibility in handling maintenance tasks?

Omnivise Maintenance gives you the solution you've always needed, ready to use now.

Omnivise Maintenance improves the performance of maintenance teams through comprehensive planning, execution, tracking and documentation of their activities.

Lower Operating Costs Delivered through more precisely planned maintenance activities. **Enhanced Safety** Supports work permit and approval procedures. **Increased Reliability** Building on the concept of Reliability Centered Maintenance. **Increased Efficiency** Through optimization and standardization of maintenance schedules and processes and automated work requests. **Increased Transparency** Through real-time work request and work order updates and easy access to historical information.



* Based on actual case study; individual results may vary.

Integrated, flexible solution that enables Reliability Centered Maintenance

Omnivise Maintenance provides the complete set of functions required to organize and seamlessly manage maintenance activities, monitor asset history and track maintenance costs. The solution addresses regularly recurring work, up to large-scale activities, like overhauls, retrofit and modernization. Required resources as well as tag-in/tag-out and safety precautions are considered.

Optimized supply with the required spare parts and consumables. That means lower costs, higher effectiveness, enhanced asset life and a smooth transition to Reliability Centered Maintenance.

Work Request

Submitted to address a malfunction or fault. Used for systematically recording such events and documenting all measures.

Work Order

Supports comprehensive planning, execution, tracking and documentation of maintenance activities, describing required actions according to defined workflow.

Work Plans

Facilitates the planning and scheduling of repetitive maintenance work on plant objects or equipment.

Projects & Outages

Provides end-to-end support for planning, execution, tracking and documenting large-scale maintenance work.

Work Safety

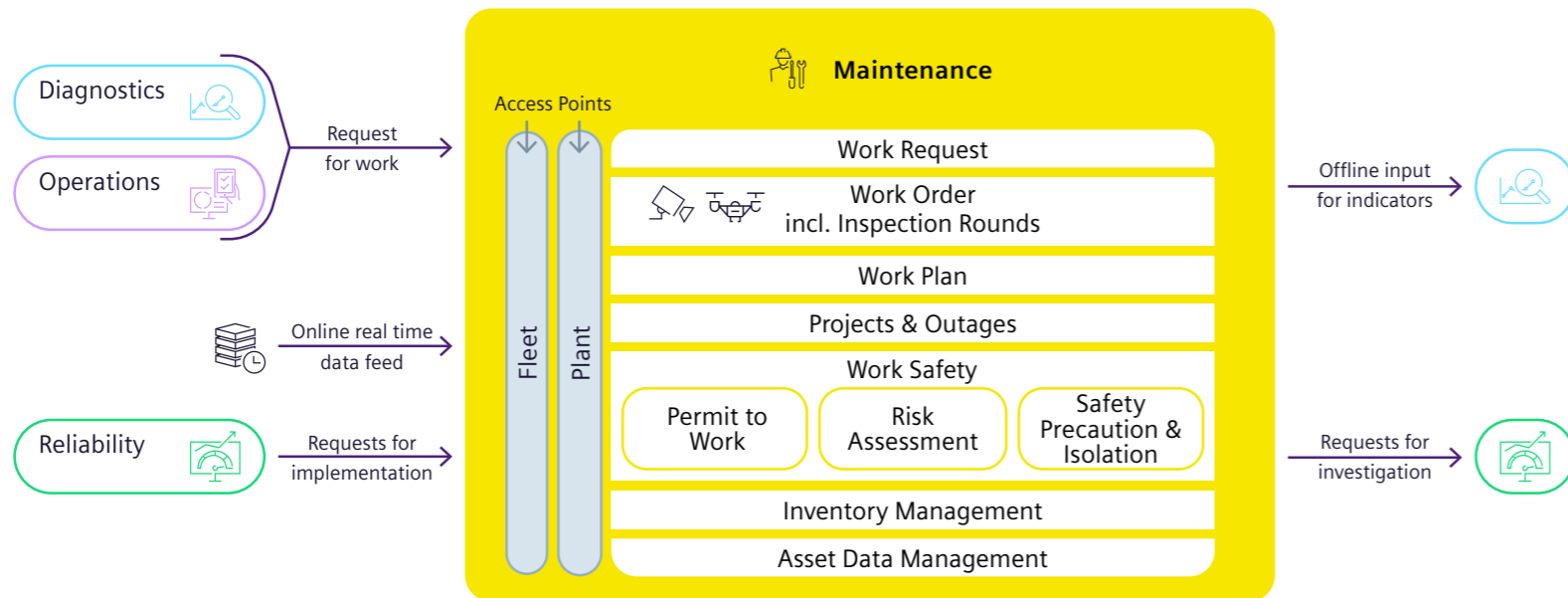
Ensures that all measures needed to keep maintenance work safe are carried out.

Inventory Management

Optimizes inventory levels for maintenance strategies, based on product lifecycles, to eliminate obsolete stock and meeting technical requirements.

Asset Data Management

Creates a key technical reference database for all technical activities by assigning unique identifiers to all plant objects.



How Siemens Energy makes the difference

1. User and workflow centric

Provides different entry points for different roles and responsibilities, and supports the complete workflows from work request to work documentation, for both remote and local teams. Integrated handshakes between Reliability, Diagnostics, Operations and Maintenance improves insight and collaboration.

2. Real-time Data

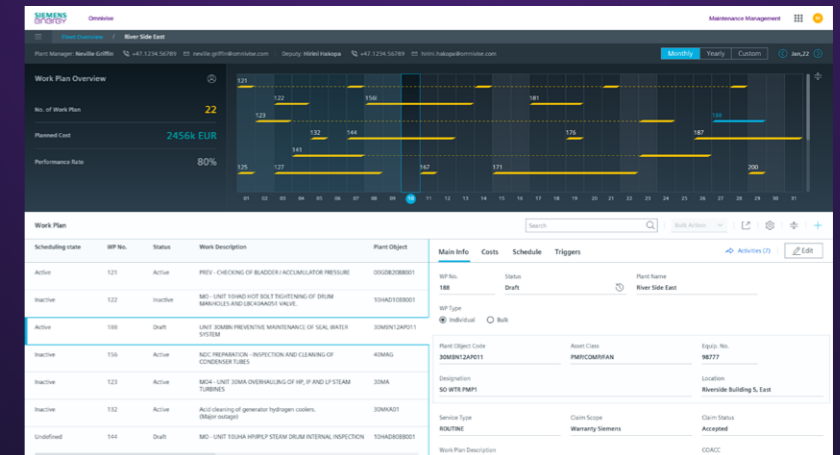
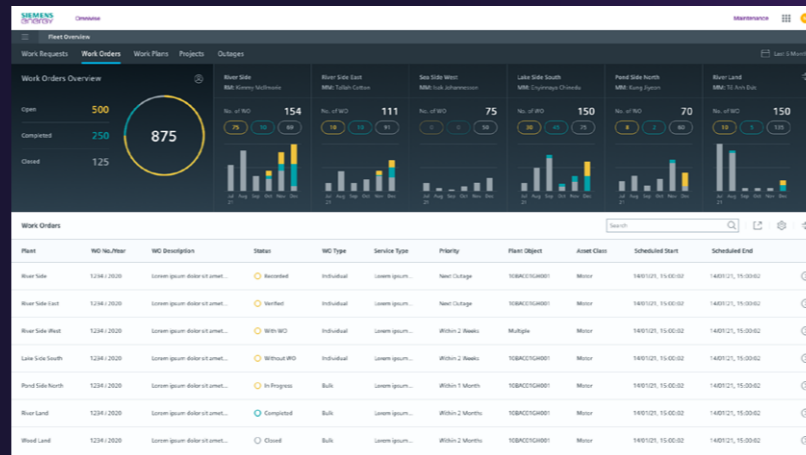
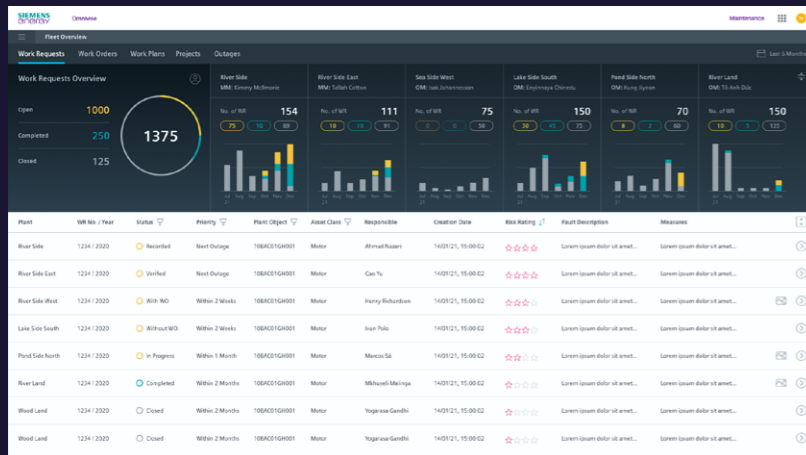
Access to all information relevant to maintenance, such as incoming work requests. Makes Inspection Round data available in real time, providing real-time access to maintenance information, enabling more effective communication.

3. Reliability Centered Maintenance (RCM)

Supports all maintenance strategies defined in RCM, using an approach that includes Failure Mode and Effect Analysis derived indicators to trigger work orders in line with RCM.

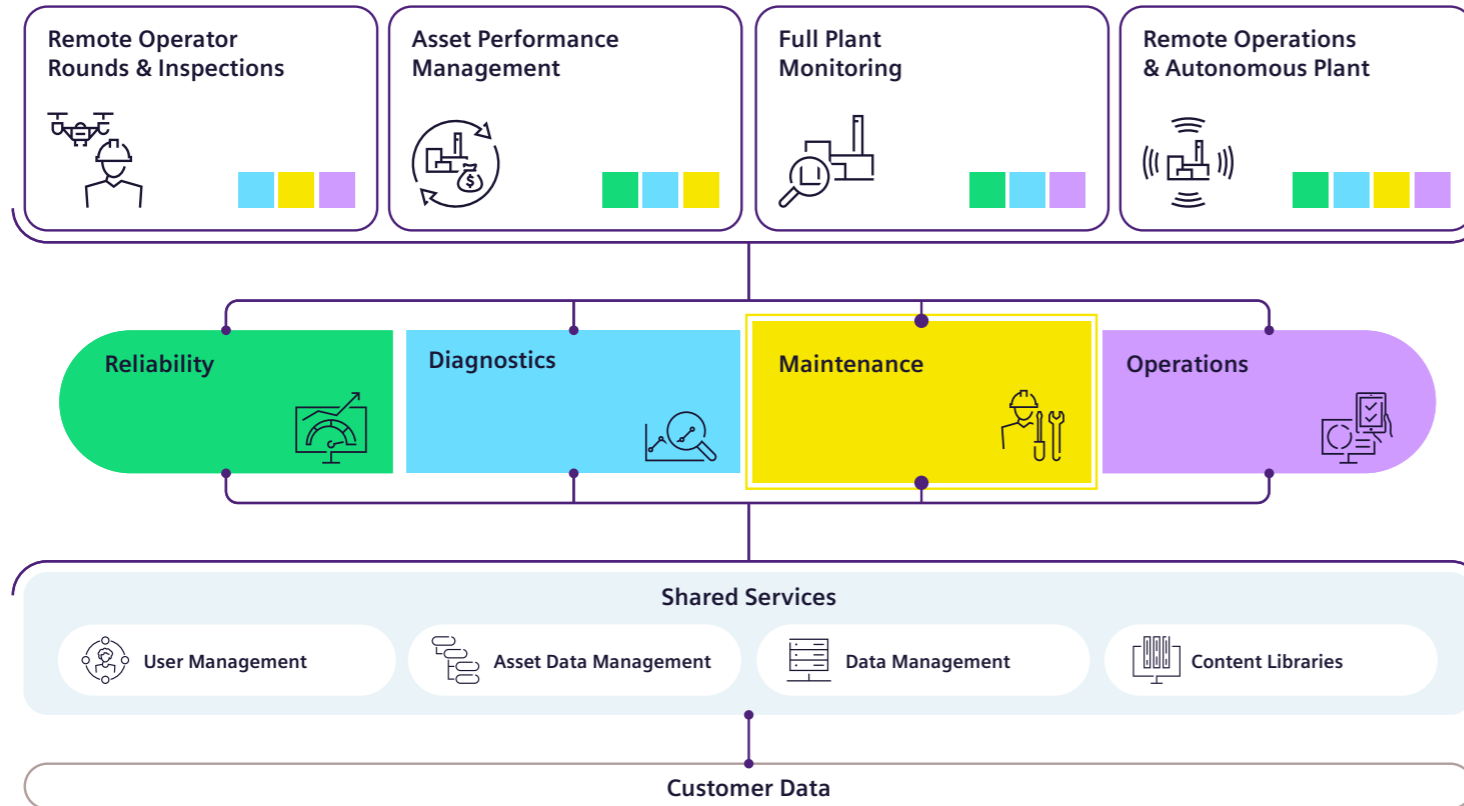
4. Integration of latest technologies

Use of data and methods that convert data into actionable insights, such as automatically generated work requests and work orders. Exploiting new technology options such as cameras and robots.



Omnivise Asset Management Suite

Modular software suite, built and used by Siemens Energy experts. Its four modular applications cover all power generation core processes and domains, supporting both local and remote teams. Built on a single platform, so users can draw on the same data and insights. Seamless workflows between applications enable cross-role collaboration, while supporting broader use cases, such as Remote Operator Rounds & Inspections, Asset Performance Management, Full Plant Monitoring, or Remote Operations up to Autonomous Plant.



How Omnivise Asset Management adds value:



Focus on roles

Tailored solutions precision-engineered for specific roles, such as Diagnosticians, Reliability Engineers, Maintenance Managers and Engineers, Operations Managers, Operators and Shift Supervisors.



Workflow-centric

Both role-specific workflows and cross-role collaboration, always based on a single source of the truth.



Latest methods and technologies

Continuously evolves to include the most advanced methods, including Predictive Maintenance based on state-of-the-art Analytics and most current concepts of Reliability Centered Maintenance.



One platform, highly modular

Single platform, based on micro-services. The modular structure enables customers to select exactly the elements they require, gradually expanding to reflect emerging goals and stages on their digital journey.



Asset-agnostic

The same outstanding results for every kind of asset, independent of vendor (Siemens Energy and non-Siemens Energy).



Proven by our experts, ready for yours

Built by engineers who use the same tools every day. Integrates Siemens Energy operator and engineer knowledge in a comprehensive, constantly updated Asset Template Library.

Published by

Siemens Energy Global GmbH & Co. KG

Otto-Hahn-Ring 6
81739 Munich, Germany

For more information, please visit our website:

www.siemens-energy.com/sm

© Siemens Energy 2022

Subject to changes and errors. The information given in this document only contains general descriptions and/or performance features which may not always specifically reflect those described, or which may undergo modification in the course of further development of the products. The requested performance features are binding only when they are expressly agreed upon in the concluded contract.

All product designations trademarks or products of Siemens Energy Global GmbH & Co. KG or other companies whose use by third parties for their own purposes could violate the rights of the owners.

Siemens Energy is a trademark licensed by Siemens AG.