

no matter  
what's under



if remotely managed by

**SMAQ** 

*the smart water metering solution  
based on standard and open networks  
to smartenize the integrated water service*

# "SMART" CONTROL AND MONITORING OF THE WATER SERVICE

## SAVINGS

reduction of management costs and service level empowerment



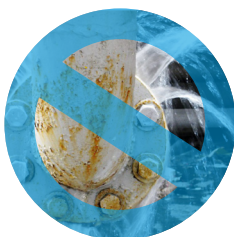
## SATISFACTION

of the customer and high reduction of disputes about alleged consumption charges



## EFFICIENCY

monitoring and detection of losses of the water network



**Complete automation of the process of reading** the consumption of the single point of supply, completely eliminating the use of practices to collect the relevant data with the intervention of personnel on the spot (walk-by, drive-by, ...)

**Automated identification of consumption anomalies** as possible symptoms of tampering or leakage; in these cases the SMAQ® allows to activate a multi-level warning procedure to alert, for example, the technical personnel of the manager and the enduser.

**Longevity beyond the requirements** because the SMAQ® devices are equipped with lithium batteries that guarantee the operation for over the limit imposed for the lifetime.

**Elimination of the network infrastructure** because communication takes place on cellular networks. The water system manager no longer has to deal with managing data networks as well.

**no matter what's under the manhole cover...**

SMAQ® collects and coordinates in a **unique IT standard platform all data** produced by the meters of any brand and flow capacity, as long as they are designed for remote metering.



# STANDARD AND OPEN TECHNOLOGIES TO OPTIMIZE TIME AND INVESTMENTS



## STANDARD AND PUBLIC DATA COMMUNICATION NETWORK

SMAQ® uses standard wireless communication technologies to ensure longevity to the project but, above all, to avoid investing in private communication infrastructures that involve the commitment to be maintained in addition to obvious territorial limitations



## UNIQUE PLATFORM

With SMAQ® the water system manager uses a unique central acquisition software (SAC) platform in which are collected the data retrieved by meters of different brands and flow capacities, as long as they are predisposed to remote metering.



**Nowadays only with SMAQ® thousands of water meters communicate via NB-IoT™**

**... but not only NB-IoT™**

SMAQ® is also available in LoRaWAN™ version.



## INTEROPERABILITY

SMAQ® allows automated integration via webservices, between the SMAQ® central acquisition software (SAC) and other systems such as the CRM-Billing of the manager, to guarantee the sharing of data on users, readings and monitoring .



SMAQ® makes available in a unique IT standard platform all the data collected (readings, alarms, etc.) from the various meters, ready to also supply other systems such as the CRM-Billing.

**not only remote metering of water consumption...**

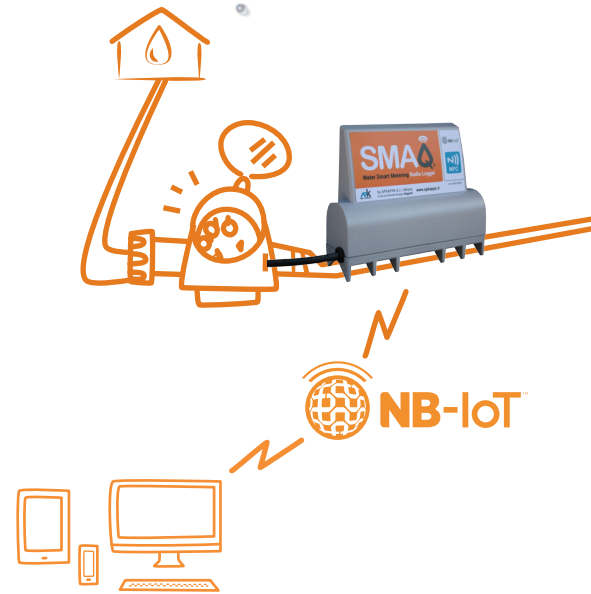
In addition to the minimum performance of the automated consumption reading, with SMAQ® you obtain the maximum and **minimum flow rate measurement, the identification of leaks, frauds, cable cutting, reverse flow** and can activate **measurement campaigns, populate water budgets, manage water districts** and numerous other functions useful for optimizing the management of the integrated water system.

**... if remotely managed by SMAQ® !**

# NB-IoT™ RADIO-LOGGER and STATIC METERS: no imposition to the existing infrastructure

To smartenize meters of different brands and capacities, already in the field and preset for remote metering, when replacement due to obsolescence or other conditions is not necessary, **SMAQ® Radio Loggers can be used** to detect and transform information of the meter in digital data and autonomously send them via the NB-IoT™ cellular network to the service management center.

If replacement is necessary, you can use **SMAQ® static meters** which are capable of directly producing digital information and send them autonomously via the NB-IoT™ cellular network to the service management center.



## more precise, easier and faster configuration thanks to the *mobile*



Tecnicians perform configuration using the **SMAQ® APP** with a smartphone or tablet connected to the meter or to the radiologger via wireless connection.

The APP makes data collection easy, also adding geographical coordinates, time references and other details.

At the end of the configuration, these same data are already available at the service management center.

The APP also supports the operations of meter replacement, diagnostics, maintenance and offers many useful functions to optimize the activities of the field personnel.



**APKAPPA srl**, is a company of Maggioli Group

via milano 80/91 I-20013 magenta (milan) italy • via m.k. gandhi 21/a 42123 reggio emilia italy  
tel. +39 02 94454.000 • fax +39 02 94454.339 • [apkappa@apkappa.it](mailto:apkappa@apkappa.it)

APKAPPA and SMAQ are registered mark of APKAPPA • the SMAQ-RL radiologger is based on technology owned by ARETI SpA and granted under non-exclusive license • all rights reserved • contents and layouts can be changed without prior notice  
2019-05 v3.3