

Spare parts for DynaGrate®

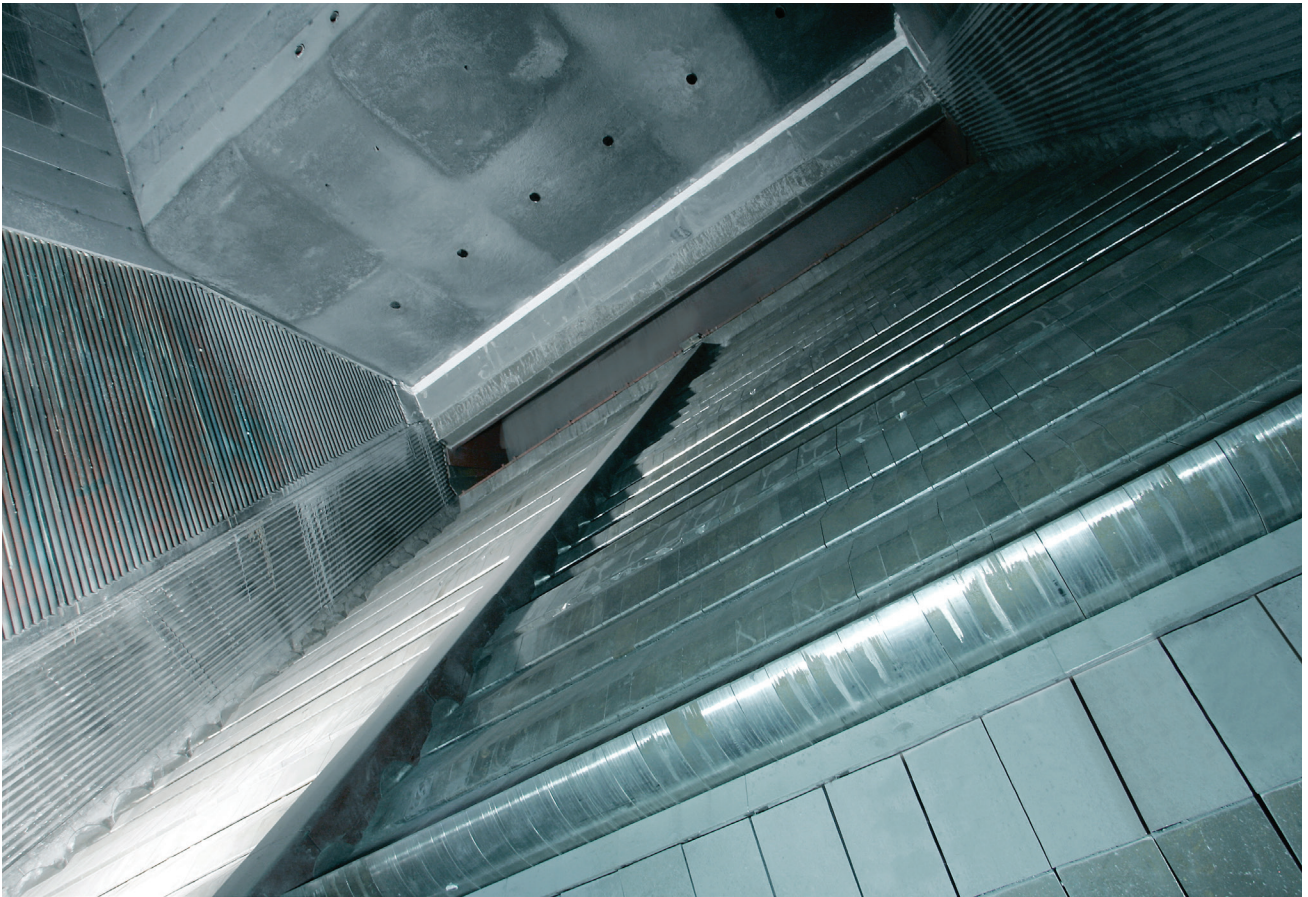


Table of contents

Wear parts for DynaGrate®



Grate bars
Page 4-5



Fixed grate bars
Page 5



Water-cooled elements
Page 5



End blocks, lower
Page 6



Cover plates
Page 6



T-plates
Page 6-7



Connection plates
Page 7



Cover plates for center piece
Page 7



Sving plates
Page 7-8



Tension rods
Page 8



Pins
Page 8-9



Stretch bolts
Page 9



Carb bearings
Page 9



Disc springs
Page 9



Inlet pipes
Page 10



Coupling blocks
Page 10



Insulation plates
Page 11

Table of contents

Strategic parts for DynaGrate®



T-plates, under
Page 12



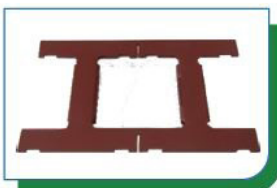
End pieces
Page 12



Middle pieces
Page 12-13



Shaft cover plates
Page 13



Frame for cover plates
Page 13



Radiation shields
Page 14-16



Support frames
Page 16



Frame rails
Page 16



Bracket elements
Page 16-18



Swing fixtures
Page 18



Sealing bushings
Side 18



Bearing housings
Page 18-19



Bearing supports
Page 19



Drive and synchronous arms
Page 19



Guiding plates
Page 20



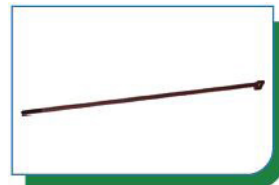
Synchronous joints
Page 20



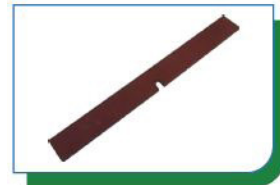
Cylinder brackets
Page 20



Guide pins
Page 20-21



Bolts L=678mm
Page 21



Strips for mantles
Page 21



Barrel bolts
Page 21



Barrel bolt suspensions
Page 22



Barrel bolt, under
Page 22



Lock plates for barrel bolts
Page 22



Lock plates
Page 22



Round steel bars
Page 23



Brackets for barrel bolts
Page 23



Disc covers
Page 23



Small sealing bushings
Page 23



Clamp fittings
Page 23



Spacers
Page 24



T-plates for middle section
Page 24-25



Covers for middle section
Page 26-27



Bearing covers and flanges
Page 27

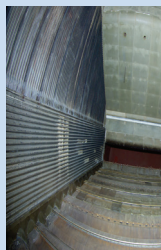


Sealing flanges
Page 27



Guide bearing housings
Page 27

Wear parts for DynaGrate®



Wear parts for DynaGrate:

- Typically stocked items
- Typically short delivery time
- Order in due time if it is a large number

Grate bar, mark 5

Grate type

- Air-cooled DynaGrate
- Water-cooled DynaGrate

Installation place

- On the shafts.

B&W's original no. 90,10,000010014

B&W's SAP no. 5000004463

Weight each 17.2 kg

Model no. 601.074



Grate bar with cooling fins

Grate type

- Air-cooled DynaGrate
- Water-cooled DynaGrate

Installation place

- On the shafts.

B&W's original no. 90,10,000010016

B&W's SAP no. 5000004458

Weight each 17.2 kg

Model no. 602.713



Last grate bar, mark 5

Grate type

- Air-cooled DynaGrate
- Water-cooled DynaGrate

Installation place

- On the shafts.

B&W's original no. 90,10,000010214

B&W's SAP no. 5000004476

Weight each 19.6 kg

Model no. 601.022



First half grate bar, mark 5

Grate type

- Water-cooled DynaGrate

Installation place

- On the shafts.

B&W's original no. 90,10,000011114

B&W's SAP no. 5000004456

Weight each 12.8 kg

Model no. 601.075



Wear parts for DynaGrate®

First half grate bar with cooling fins

Grate type	B&W's original do.	90,10,000011116
<ul style="list-style-type: none">• Air-cooled DynaGrate• Water-cooled DynaGrate	B&W's SAP no.	5000004452
	Weight each	12.8 kg
Installation place	Model no.	602.714
<ul style="list-style-type: none">• On the shafts.		



Last half grate bar, mark 5

Grate type	B&W's original no.	90,10,000011214
<ul style="list-style-type: none">• Air-cooled DynaGrate• Water-cooled DynaGrate	B&W's SAP no.	5000004472
	Wight each	11.6 kg
Installation place	Model no.	601.076
<ul style="list-style-type: none">• On the shafts.		



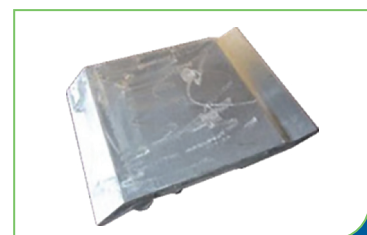
Fixed grate bar W=200 mm, mark 5

Grate type	B&W's original no.	90,10,000012014
<ul style="list-style-type: none">• Air-cooled DynaGrate• Water-cooled DynaGrate	B&W's SAP no.	5000004449
	Weight each	22.0 kg
Installation place	Model no.	601.151
<ul style="list-style-type: none">• On the grate bed, in upper bracket element.		



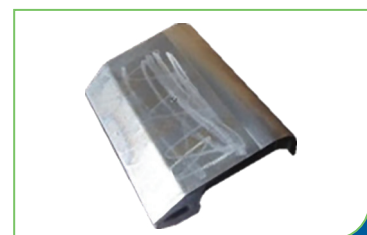
Grate element, water-cooled

Grate type	B&W's original no.	90,10,000010017
<ul style="list-style-type: none">• Water-cooled DynaGrate	B&W's SAP no.	5200018581
	Weight each	57.4 kg
Installation place	Model no.	690.055
<ul style="list-style-type: none">• On the shafts.		



First half grate bar, water-cooled

Grate type	B&W's original no.	90,10,000011117
<ul style="list-style-type: none">• Water-cooled DynaGrate	B&W's SAP no.	5200018582
	Weight each	41.0 kg
Installation place	Model no.	690.062
<ul style="list-style-type: none">• On the shafts.		



Wear parts for DynaGrate®

End block, lower, mark 5

Grate type	B&W's original no.	90,10,000015220
<ul style="list-style-type: none"> • Air-cooled DynaGrate • Water-cooled DynaGrate 	B&W's SAP no.	5000000822
	Weight each	4.5 kg
Installation place	Model no.	601.095
<ul style="list-style-type: none"> • In the end section, in the frame for the cover plate. 		



Cover plate

Grate type	B&W's original no.	90,10,00001600
<ul style="list-style-type: none"> • Air-cooled DynaGrate • Water-cooled DynaGrate 	B&W's SAP no.	3 5000001744
	Weight each	8.9 kg
Installation place	Model no.	1-529-1B
<ul style="list-style-type: none"> • In the end section, in the frame for the cover plate. 		



Cover plate for centre bracket

Grate type	B&W's original no.	90,10,000016004
<ul style="list-style-type: none"> • Air-cooled DynaGrate • Water-cooled DynaGrate 	B&W's SAP no.	5200009908
	Weight each	8.9 kg
Installation place	Model no.	0039819
<ul style="list-style-type: none"> • In the end section, in the frame for the cover plate. 		



T-plate, upper left/lower right, mark 5

Grate type	B&W's original no.	90,10,000016112
<ul style="list-style-type: none"> • Air-cooled DynaGrate • Water-cooled DynaGrate 	B&W's SAP no.	5000006512
	Weight each	13.8 kg
Installation place	Model no.	601.139
<ul style="list-style-type: none"> • Interior side of the grate, around the shafts. 		



T-plate, upper right/lower left, mark 5

Grate type	B&W's original no.	90,10,000016122
<ul style="list-style-type: none"> • Air-cooled DynaGrate • Water-cooled DynaGrate 	B&W's SAP no.	5000006509
	Weight each	13.8 kg
Installation place	Model no.	601.138
<ul style="list-style-type: none"> • Interior side of the grate, around the shafts. 		



Wear parts for DynaGrate®

T-plate

Grate type	B&W's original no.	90,10,000016231
<ul style="list-style-type: none">• Air-cooled DynaGrate• Water-cooled DynaGrate	B&W's SAP no.	5000006498
	Weight each	17.2 kg
Installation place	Model no.	601.127
<ul style="list-style-type: none">• Interior side of the grate, around the shafts.		



Connection plate

Grate type	B&W's original no.	90,10,000016730
<ul style="list-style-type: none">• Air-cooled DynaGrate• Water-cooled DynaGrate	B&W's SAP no.	5000006635
	Weight each	9.6 kg
Installation place	Model no.	601.094
<ul style="list-style-type: none">• Start section before the first half grate bars. Mounted on swing bracket.		



Cover plate for middle piece with hole

Grate type	B&W's original no.	90,10,000016860
<ul style="list-style-type: none">• Air-cooled DynaGrate• Water-cooled DynaGrate	B&W's SAP no.	5000001753
	Weight each	5.4 kg
Installation place	Model no.	601.117
<ul style="list-style-type: none">• Above the T-plates on grate 1, in both sides internally.		



Cover plate for upper middle piece

Grate type	B&W's original no.	90,10,000016861
<ul style="list-style-type: none">• Air-cooled DynaGrate• Water-cooled DynaGrate	B&W's SAP no.	5000001772
	Weight each	1.9 kg
Installation place	Model no.	601.118
<ul style="list-style-type: none">• On the shafts.		



Swing plate

Grate type	B&W's original no.	90,10,000019200
<ul style="list-style-type: none">• Air-cooled DynaGrate• Water-cooled DynaGrate	B&W's SAP no.	5000006307
	Weight each	15.3 kg
Installation place	Model no.	601.096
<ul style="list-style-type: none">• Interior grate sides, by the shafts.		



Wear parts for DynaGrate®

Swing plate for Ø110 mm shaft

Grate type	B&W's original no.	90,10,000019202
<ul style="list-style-type: none">• Air-cooled DynaGrate• Water-cooled DynaGrate	B&W's SAP no.	5000006306
	Weight each	15.3 kg
Installation place	Model no.	602.734
<ul style="list-style-type: none">• Interior grate sides by the shafts.		



Swing plate for middle section

Grate type	B&W's original no.	90,10,000019208
<ul style="list-style-type: none">• Air-cooled DynaGrate• Water-cooled DynaGrate	B&W's SAP no.	5000006305
	Weight each	4.6 kg
Installation place	Model no.	601.432
<ul style="list-style-type: none">• Interior grate sides by the shafts.		



Tension rod, 4a

Grate type	B&W's original no.	90,40,000045014
<ul style="list-style-type: none">• Air-cooled DynaGrate• Water-cooled DynaGrate	B&W's SAP no.	5000007305
	Weight each	13.7 kg
Installation place	Model no.	601.226
<ul style="list-style-type: none">• Exterior side of the grate. Cylinder brackets are fitted on it.		



Tension rod, 6a

Grate type	B&W's original no.	90,40,000045024
<ul style="list-style-type: none">• Air-cooled DynaGrate• Water-cooled DynaGrate	B&W's SAP no.	5000007307
	Weight each	26.5 kg
Installation place	Model no.	601.226
<ul style="list-style-type: none">• Exterior side of the grate. Cylinder brackets are fitted on it.		



Pin for drive arm with carb bearing L=60 mm, Ø40 mm

Grate type	B&W's original no.	90,70,000074104
<ul style="list-style-type: none">• Air-cooled DynaGrate• Water-cooled DynaGrate	B&W's SAP no.	5000006610
	Weight each	0.6 kg
Installation place	Model no.	601.849
<ul style="list-style-type: none">• Together with drive arm and tensiod rod.		



Wear parts for DynaGrate®

Pin for synchronous joint with carb bearing L=79 mm, Ø40 mm

Grate type	B&W's original no. 90,70,000074214
<ul style="list-style-type: none">• Air-cooled DynaGrate• Water-cooled DynaGrate	B&W's SAP no. 5000006611
	Weight each 0.7 kg
Installation place	Model no. 601.848
<ul style="list-style-type: none">• Together with synchronous arm and synchronous joint.	



Pin for cylinder L=109 mm, Ø45 mm

Grate type	B&W's original no. 90,70,000074222
<ul style="list-style-type: none">• Air-cooled DynaGrate• Water-cooled DynaGrate	B&W's SAP no. 5000006608
	Weight each 1.4 kg
Installation place	Model no. 601.808
<ul style="list-style-type: none">• Together with the grate cylinder and cylinder bracket.	



Stretch bolt M16x110 mm

Grate type	B&W's original no. 90,80,000080723
<ul style="list-style-type: none">• Air-cooled DynaGrate• Water-cooled DynaGrate	B&W's SAP no. 5000002731
	Weight each 0.2 kg
Installation place	Model 601.828
<ul style="list-style-type: none">• Used to bolt the grate bars to the shafts.	



Carb bearing 40/62x22 mm

Grate type	B&W's original no. 90,80,000086120
<ul style="list-style-type: none">• Air-cooled DynaGrate• Water-cooled DynaGrate	B&W's SAP no. 5000003135
	Weight each 0.3 kg
Installation place	
<ul style="list-style-type: none">• In the tension rod.	



Disc spring Ø159 mm/111x1.5 mm

Grate type	B&W's original no. 90,70,000071230
<ul style="list-style-type: none">• Air-cooled DynaGrate• Water-cooled DynaGrate	B&W's SAP no. 5000002999
	Weight each 0.2 kg
Installation place	
<ul style="list-style-type: none">• At the bottom of the shafts together with the disc spring cover.	



Wear parts for DynaGrate®

Inlet pipe, right

Grate type	B&W's original no. 90,70,000079610
• Water-cooled DynaGrate	B&W's SAP no. 5000007032
Installation place	Weight each 3.3 kg
• Below the water-cooled grate elements, on the side of the shafts.	Model no. 601.200



Inlet pipe, left

Grate type	B&W's original no. 90,70,000079611
• Water-cooled DynaGrate	B&W's SAP no. 5000007033
Installation place	Weight each 3.3 kg
• Below the water-cooled grate elements, by the side of the shafts.	Model no. 601.229



Coupling block

Grate type	B&W's original no. 90,70,000079660
• Water-cooled DynaGrate	B&W's SAP no. 5000002894
Installation place	Weight each 1.6 kg
• Below and between the water-cooled grate elements.	Model no. 601.239



Wear parts for DynaGrate®

Insulation plate III L=4790 mm (furnace width 5200 mm)

Available for the following types:

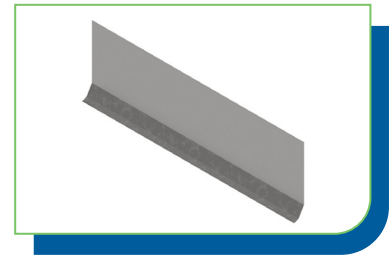
- Furnace width 1600
- Furnace width 1800
- Furnace width 2000
- Furnace width 2200
- Furnace width 2400
- Furnace width 2800
- Furnace width 3200
- Furnace width 3600
- Furnace width 4000
- Furnace width 4200
- Furnace width 4400
- Furnace width 4800

B&W's original no. 90,40,000049136

B&W's SAP no. 5200017753

Weight each 58.5 kg

Model no. 601.317



Installation place

- Under the grate bed, by all sections.

Insulation plate IV L=4790 mm (furnace width 5200 mm)

Available for the following types:

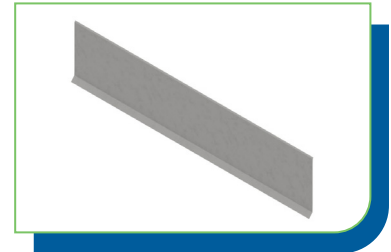
- Furnace width 1600
- Furnace width 1800
- Furnace width 2000
- Furnace width 2200
- Furnace width 2400
- Furnace width 2800
- Furnace width 3200
- Furnace width 3600
- Furnace width 4000
- Furnace width 4200
- Furnace width 4400
- Furnace width 4800

B&W's original no. 90,40,000049146

B&W's SAP no. 5200017754

Weight each 40.0 kg

Model no. 601.320



Installation place

- Under the grate bed, by all sections.

Strategic parts for DynaGrate®



Strategic parts for DynaGrate:

- Typically not stocked items
- Typically long delivery time
- Always order in due time

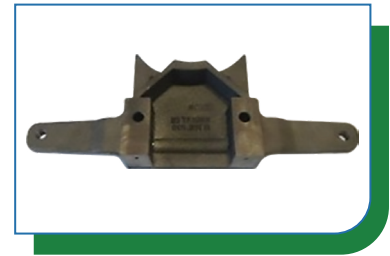
T-plate, under

Grate type	B&W's original no.	90,10,000016308
<ul style="list-style-type: none"> • Air-cooled DynaGrate • Water-cooled DynaGrate 	B&W's SAP no.	5000006506
	Weight each	8.5 kg
Installation place	Model no.	601.210
<ul style="list-style-type: none"> • Exterior side of the grate, on the fixed bearing brackets. 		



T-plate, upper left/lower right, under

Grate type	B&W's original no.	90,10,000016318
<ul style="list-style-type: none"> • Air-cooled DynaGrate • Water-cooled DynaGrate 	B&W's SAP no.	5000006507
	Weight each	9.0 kg
Installation place	Model no.	601.211
<ul style="list-style-type: none"> • Exterior side of the grate, on the fixed bearing brackets. 		



End piece

Grate type	B&W's original no.	90,10,000016670
<ul style="list-style-type: none"> • Air-cooled DynaGrate • Water-cooled DynaGrate 	B&W's SAP no.	5000000830
	Weight each	5.6 kg
Installation place	Model no.	601.301
<ul style="list-style-type: none"> • In the end section. 		



Middle piece

Grate type	B&W's original no.	90,20,000023230
<ul style="list-style-type: none"> • Air-cooled DynaGrate • Water-cooled DynaGrate 	B&W's SAP no.	5000003278
	Weight each	24.9 kg
Installation place	Model no.	601.110
<ul style="list-style-type: none"> • At the top of the grate sides, up against the cover plates, all the way down. 		



Strategic parts for DynaGrate®

Middle piece, top

Grate type	B&W's original no.	90,20,000023231
<ul style="list-style-type: none"> • Air-cooled DynaGrate • Water-cooled DynaGrate 	B&W's SAP no.	5000003279
	Weight each	13.5 kg
Installation place	Model no.	601.119
<ul style="list-style-type: none"> • At the top of the grate sides, up against the cover plates, at the start section. 		



Shaft cover plate, type T

Grate type	B&W's original no.	90,20,000026301
<ul style="list-style-type: none"> • Air-cooled DynaGrate • Water-cooled DynaGrate 	B&W's SAP no.	5000000845
	Weight each	8.9 kg
Installation place	Model no.	601.128
<ul style="list-style-type: none"> • Between the swing plates and shafts, all the way down. 		



Shaft cover plate, upper left/lower right

Grate type	B&W's original no.	90,20,000026311
<ul style="list-style-type: none"> • Air-cooled DynaGrate • Water-cooled DynaGrate 	B&W's SAP no.	5000000851
	Weight each	6.0 kg
Installation place	Model no.	601.137
<ul style="list-style-type: none"> • Start/end section by the swing plate, top-left side and bottom-right side. 		



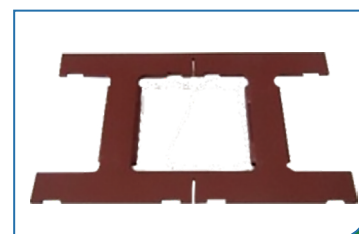
Shaft cover plate, upper right/lower left

Grate type	B&W's original no.	90,20,000026321
<ul style="list-style-type: none"> • Air-cooled DynaGrate • Water-cooled DynaGrate 	B&W's SAP no.	5000000846
	Weight each	6.0 kg
Installation place	Model no.	601.136
<ul style="list-style-type: none"> • Start/end section by the swing plate, top-right side and bottom-left side. 		



Frame for cover plates

Grate type	B&W's original no.	90,40,000044012
<ul style="list-style-type: none"> • Air-cooled DynaGrate • Water-cooled DynaGrate 	B&W's SAP no.	5200008539
	Weight each	3.8 kg
Installation place	Model no.	0427017
<ul style="list-style-type: none"> • End section. Used for the cover plates and terminal blocks. 		



Strategic parts for DynaGrate®

Upper radiation shield, radius 77 mm

Grate type	B&W's original no.	90,40,000046110
<ul style="list-style-type: none"> • Air-cooled DynaGrate • Water-cooled DynaGrate 	B&W's SAP no.	5000006237
	Weight each	7.5 kg
Installation place	Model no.	601.299
<ul style="list-style-type: none"> • Exterior side of the grate, by the shafts. 		



Upper radiation shield, radius 82 mm

Grate type	B&W's original no.	90,40,000046111
<ul style="list-style-type: none"> • Air-cooled DynaGrate • Water-cooled DynaGrate 	B&W's SAP no.	5000006969
	Weight each	7.5 kg
Installation place	Model no.	601.237
<ul style="list-style-type: none"> • Exterior side of the grate, by the shafts. 		



Upper radiation shield for grate W=5600-6000 mm, radius 82/87 mm

Grate type	B&W's original no.	90,40,000046116
<ul style="list-style-type: none"> • Air-cooled DynaGrate • Water-cooled DynaGrate 	B&W's SAP no.	5200008142
	Weight each	7.5 kg
Installation place	Model no.	0411327
<ul style="list-style-type: none"> • Exterior side of the grate, by the shafts. 		



Lower radiation shield, type T, radius 77 mm

Grate type	B&W's original no.	90,40,000046101
<ul style="list-style-type: none"> • Air-cooled DynaGrate • Water-cooled DynaGrate 	B&W's SAP no.	5000006236
	Weight each	5.3 kg
Installation place	Model no.	601.129
<ul style="list-style-type: none"> • Exterior side of the grate, by the shafts. 		



Lower radiation shield, radius 82 mm

Grate type	B&W's original no.	90,40,000046103
<ul style="list-style-type: none"> • Air-cooled DynaGrate • Water-cooled DynaGrate 	B&W's SAP no.	5000003415
	Weight each	5.3 kg
Installation place	Model no.	602.735
<ul style="list-style-type: none"> • Exterior side of the grate, by the shafts. 		



Strategic parts for DynaGrate®

Lower radiation shield for grate W=5600–6000, radius 87 mm

Grate type	B&W's original no.	90,40,000046016
<ul style="list-style-type: none"> • Air-cooled DynaGrate • Water-cooled DynaGrate 	B&W's SAP no.	5200008141
	Weight each	5.3 kg
Installation place	Model no.	0411308
<ul style="list-style-type: none"> • Exterior side of the grate, by the shafts. 		



Lower radiation shield, lower left/upper right

Grate type	B&W's original no.	90,40,000046123-1
<ul style="list-style-type: none"> • Air-cooled DynaGrate • Water-cooled DynaGrate 	B&W's SAP no.	5000007434
	Weight each	3.4 kg
Installation place	Model no.	602.736
<ul style="list-style-type: none"> • Exterior side of the grate, by the first and last sections. 		



Lower radiation shield, upper left/lower right

Grate type	B&W's original no.	90,40,000046123-2
<ul style="list-style-type: none"> • Air-cooled DynaGrate • Water-cooled DynaGrate 	B&W's SAP no.	5200010399
	Weight each	3.4 kg
Installation place	Model no.	602.736
<ul style="list-style-type: none"> • Exterior side of the grate, by the first and last sections. 		



Upper radiation shield, lower left/upper right

Grate type	B&W's original no.	90,40,000046133-1
<ul style="list-style-type: none"> • Air-cooled DynaGrate • Water-cooled DynaGrate 	B&W's SAP no.	5000007437
	Weight each	4.1 kg
Installation place	Model no.	602.737
<ul style="list-style-type: none"> • Exterior side of the grate, by the first and last sections. 		



Upper radiation shield, upper left/lower right

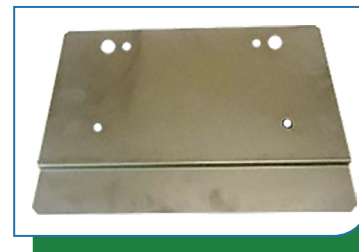
Grate type	B&W's original no.	90,40,000046133-2
<ul style="list-style-type: none"> • Air-cooled DynaGrate • Water-cooled DynaGrate 	B&W's SAP no.	5200010400
	Weight each	4.1 kg
Installation place	Model no.	602.737
<ul style="list-style-type: none"> • Exterior side of the grate, by the first and last sections. 		



Strategic parts for DynaGrate®

Radiation shield for middle piece

Grate type	B&W's original no.	90,40,000046140
<ul style="list-style-type: none"> • Air-cooled DynaGrate • Water-cooled DynaGrate 	B&W's SAP no.	5000006235
	Weight each	1.1 kg
Installation place	Model no.	600.998
<ul style="list-style-type: none"> • Below the middle piece and above the insulation at the top of the grate sides. 		



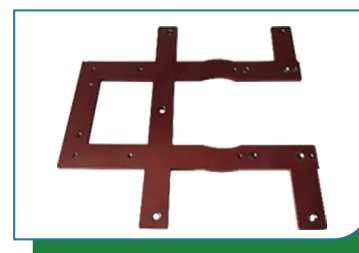
Support frame, type T

Grate type	B&W's original no.	90,40,000046201
<ul style="list-style-type: none"> • Air-cooled DynaGrate • Water-cooled DynaGrate 	B&W's SAP no.	5000001298
	Weight each	9.3 kg
Installation place	Model no.	601.126
<ul style="list-style-type: none"> • Around the radiation shield for fitting of the guide pin etc. 		



Frame for bottom T-plate

Grate type	B&W's original no.	90,40,000046202
<ul style="list-style-type: none"> • Air-cooled DynaGrate • Water-cooled DynaGrate 	B&W's SAP no.	5000007096
	Weight each	10.6 kg
Installation place	Model no.	601.141
<ul style="list-style-type: none"> • Around the radiation shield for fitting of the guide pin etc. 		



Rail for frame

Grate type	B&W's original no.	90,40,000046210
<ul style="list-style-type: none"> • Air-cooled DynaGrate • Water-cooled DynaGrate 	B&W's SAP no.	5000005569
	Weight each	2.3 kg
Installation place	Model no.	600.985
<ul style="list-style-type: none"> • Around the support frame (top). 		



Bracket, upper, element 1, left, L=398 mm

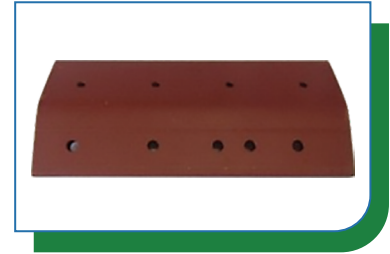
Grate type	B&W's original no.	90,40,00047111L
<ul style="list-style-type: none"> • Air-cooled DynaGrate • Water-cooled DynaGrate 	B&W's SAP no.	5200008129
	Weight each	8.3 kg
Installation place	Model no.	601.322
<ul style="list-style-type: none"> • On the lower brackets, at the elements between the grate transitions. 		



Strategic parts for DynaGrate®

Bracket, upper, element 1, left, L=394 mm

Grate type	B&W's original no.	90,40,000047114
• Air-cooled DynaGrate	B&W's SAP no.	5200007639
• Water-cooled DynaGrate	Weight each	8.3 kg
Installation place	Model no.	0346181
• On the lower brackets, at the elements between the grate transitions.		



Bracket, upper, element 1, right, L=398 mm

Grate type	B&W's original no.	90,40,00047111R
• Air-cooled DynaGrate	B&W's SAP no.	5200008128
• Water-cooled DynaGrate	Weight each	8.3 kg
Installation place	Model no.	601.322
• On the lower brackets, at the elements between the grate transitions.		



Bracket, upper, element 1, right, L=394 mm

Grate type	B&W's original no.	90,40,000047115
• Air-cooled DynaGrate	B&W's SAP no.	5200007641
• Water-cooled DynaGrate	Weight each	8.3 kg
Installation place	Model no.	03416181
• On the lower brackets, at the elements between the grate transitions.		



Bracket, upper, element 2

Grate type	B&W's original no.	90,40,000047112
• Air-cooled DynaGrate	B&W's SAP no.	5000002936
• Water-cooled DynaGrate	Weight each	4.3 kg
Installation place	Model no.	601.323
• On the lower brackets, at the elements between the grate transitions.		



Bracket, lower, element 2

Grate type	B&W's original no.	90,40,000047122
• Air-cooled DynaGrate	B&W's SAP no.	5000007050
• Water-cooled DynaGrate	Weight each	21.2 kg
Installation place	Model no.	601.327
• On the lower frame, between the section transitions, together with the upper bracket.		



Strategic parts for DynaGrate®

Lower bracket element, left

Grate type	B&W's original no.	90,40,00047126L
<ul style="list-style-type: none">• Air-cooled DynaGrate• Water-cooled DynaGrate	B&W's SAP no.	5200008486
	Weight each	8.4 kg
Installation place	Model no.	601.246
<ul style="list-style-type: none">• On the lower frame, between the section transitions, together with the upper bracket.		



Lower bracket element, right (as shown)

Grate type	B&W's original no.	90,40,00047126R
<ul style="list-style-type: none">• Air-cooled DynaGrate• Water-cooled DynaGrate	B&W's SAP no.	5200008487
	Weight each	8.4 kg
Installation place	Model no.	601.246
<ul style="list-style-type: none">• On the lower frame, between the section transitions, together with the upper bracket.		



Swing fitting for connection plate

Grate type	B&W's original no.	90,40,000049640
<ul style="list-style-type: none">• Air-cooled DynaGrate• Water-cooled DynaGrate	B&W's SAP no.	5000006304
	Weight each	5.6 kg
Installation place	Model no.	601.231
<ul style="list-style-type: none">• On the barrel bolt, which is located between the pusher table and the first grate. The connection plate is mounted on it.		



Sealing bush Ø180 mm

Grate type	B&W's original no.	90,20,000022032
<ul style="list-style-type: none">• Air-cooled DynaGrate• Water-cooled DynaGrate	B&W's SAP no.	5000003545
	Weight each	2.7 kg
Installation place	Model no.	601.438
<ul style="list-style-type: none">• Outside the bearing housing on all shafts.		



Bearing housing GGG40, Ø110 mm

Grate type	B&W's original no.	90,20,00002102
<ul style="list-style-type: none">• Air-cooled DynaGrate• Water-cooled DynaGrate	B&W's SAP no.	5000003150
	Weight each	13.5 kg
Installation place	Model no.	601.235
<ul style="list-style-type: none">• On the shafts, on the exterior side of the grate.		



Strategic parts for DynaGrate®

Bearing housing EN GJS-400-15, Ø110 mm

Grate type	B&W's original no.	90,20,000022103
<ul style="list-style-type: none">• Air-cooled DynaGrate• Water-cooled DynaGrate	B&W's SAP no.	5200008078
	Weight each	13.5 kg
Installation place	Model no.	601.235
<ul style="list-style-type: none">• On the shafts, on the exterior side of the grate.		



Fixed bearing support

Grate type	B&W's original no.	90,20,000022108
<ul style="list-style-type: none">• Air-cooled DynaGrate• Water-cooled DynaGrate	B&W's SAP no.	5000001920
	Weight each	32.0 kg
Installation place	Model no.	601.198
<ul style="list-style-type: none">• On the inside of the grate sections. The shafts are mounted on it.		



Driving arm with carb bearing Ø100 mm

Grate type	B&W's original no.	90,20,000024016
<ul style="list-style-type: none">• Air-cooled DynaGrate• Water-cooled DynaGrate	B&W's SAP no.	5000001717
	Weight each	20.0 kg
Installation place	Model no.	602.738
<ul style="list-style-type: none">• On the shafts together with the synchronous arm and guiding plate.		



Synchronous arm for carb bearing, H=116 mm

Grate type	B&W's original no.	90,20,000024312
<ul style="list-style-type: none">• Air-cooled DynaGrate• Water-cooled DynaGrate	B&W's SAP no.	5000006314
	Weight each	16.0 kg
Installation place	Model no.	601.194-1
<ul style="list-style-type: none">• On the shafts together with the driving arm and guiding plate.		



Synchronous arm for carb bearing H=72 mm

Grate type	B&W's original no.	90,20,000024322
<ul style="list-style-type: none">• Air-cooled DynaGrate• Water-cooled DynaGrate	B&W's SAP no.	5000006315
	Weight each	16.0 kg
Installation place	Model no.	601.194-2
<ul style="list-style-type: none">• On the shafts together with the driving arm and guiding plate.		



Strategic parts for DynaGrate®

Guiding plate with high spring, Ø100 mm

Grate type	B&W's original no.	90,20,000025014
<ul style="list-style-type: none">• Air-cooled DynaGrate• Water-cooled DynaGrate	B&W's SAP no.	5000003274
	Weight each	19.0 kg
Installation place	Model no.	601.173
<ul style="list-style-type: none">• On the shafts together with the driving arm and synchronous arm.		



Synchronous joint with carb bearing

Grate type	B&W's original no.	90,20,000024414
<ul style="list-style-type: none">• Air-cooled DynaGrate• Water-cooled DynaGrate	B&W's SAP no.	5000006319
	Weight each	3.2 kg
Installation place	Model no.	601.441
<ul style="list-style-type: none">• Between the synchronous arms, at the shafts.		



Right cylinder bracket

Grate type	B&W's original no.	90,20,000025212
<ul style="list-style-type: none">• Air-cooled DynaGrate• Water-cooled DynaGrate	B&W's SAP no.	5000001654
	Weight each	7.2 kg
Installation place	Model no.	601.193-1
<ul style="list-style-type: none">• On the tension rods.		



Left cylinder bracket

Grate type	B&W's original no.	90,20,000025222
<ul style="list-style-type: none">• Air-cooled DynaGrate• Water-cooled DynaGrate	B&W's SAP no.	5000001651
	Weight each	7.2 kg
Installation place	Model no.	601.193-2
<ul style="list-style-type: none">• On the tension rods.		



Guide pin Ø25mm, L=160 mm

Grate type	B&W's original no.	90,70,000074300
<ul style="list-style-type: none">• Air-cooled DynaGrate• Water-cooled DynaGrate	B&W's SAP no.	5000006256
	Weight each	0.4 kg
Installation place	Model no.	600.988
<ul style="list-style-type: none">• Fixed in the bearing housing and secured in the support frame.		



Strategic parts for DynaGrate®

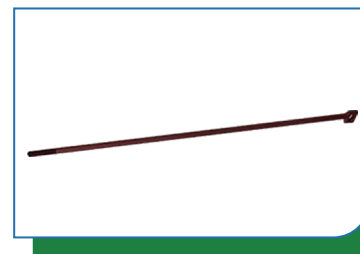
Guide pin Ø25 mm, L=176 mm

Grate type	B&W's original no.	90,70,000074302
<ul style="list-style-type: none">• Air-cooled DynaGrate• Water-cooled DynaGrate	B&W's SAP no.	5200007638
	Weight each	0.4 kg
Installation place	Model no.	0346131
<ul style="list-style-type: none">• Fixed in the bearing housing and secured in the support frame.		



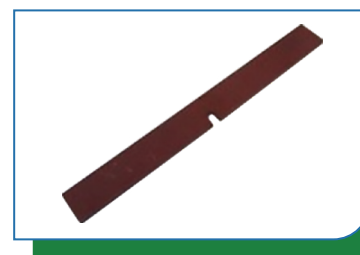
Bolt L=678 mm

Grate type	B&W's original no.	90,70,000074400
<ul style="list-style-type: none">• Air-cooled DynaGrate• Water-cooled DynaGrate	B&W's SAP no.	5000001251
	Weight each	0.7 kg
Installation place	Model no.	600.996
<ul style="list-style-type: none">• Into the side of the grate sections, through the middle piece. It holds the cover plate in place at the end.		



Strip for mantle and T-plate

Grate type	B&W's original no.	90,70,000078570
<ul style="list-style-type: none">• Air-cooled DynaGrate• Water-cooled DynaGrate	B&W's SAP no.	5200010233
	Weight each	0.7 kg
Installation place	Model no.	0044095
<ul style="list-style-type: none">• Between the mantles, in the top.		



Barrel bolt for T-plate/shaft cover plate

Grate type	B&W's original no.	90,70,000078500
<ul style="list-style-type: none">• Air-cooled DynaGrate• Water-cooled DynaGrate	B&W's SAP no.	5000005902
	Weight each	1.0 kg
Installation place	Model no.	600.290
<ul style="list-style-type: none">• Inside, behind the T-plate. It holds the T-plate in place.		



Barrel bolt for upper/lower T-plate

Grate type	B&W's original no.	90,70,000078501
<ul style="list-style-type: none">• Air-cooled DynaGrate• Water-cooled DynaGrate	B&W's SAP no.	5000005903
	Weight each	0.2 kg
Installation place	Model no.	600.191
<ul style="list-style-type: none">• Inside, behind the upper left/lower right T-plate.		



Strategic parts for DynaGrate®

Barrel suspension for connection plate

Grate type	B&W's original no.	90,70,000078530
<ul style="list-style-type: none">• Air-cooled DynaGrate• Water-cooled DynaGrate	B&W's SAP no.	5000005904
	Weight each	11.7 kg
Installation place	Model no.	602.701
<ul style="list-style-type: none">• Into the end of the pusher table on which the swing fixture and connection plates are located.		



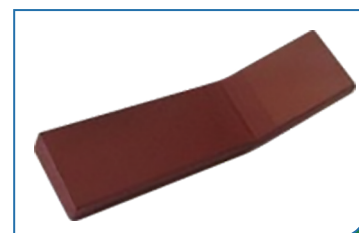
Barrel bolt for lower T-plate

Grate type	B&W's original no.	90,70,000078540
<ul style="list-style-type: none">• Air-cooled DynaGrate• Water-cooled DynaGrate	B&W's SAP no.	5000007436
	Weight each	0.6 kg
Installation place	Model no.	601.813
<ul style="list-style-type: none">• Together with the lower T-plate.		



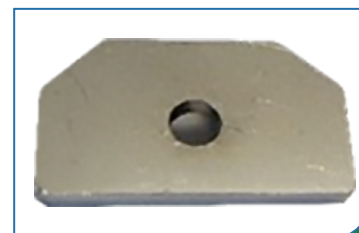
Lock plate for barrel bolt

Grate type	B&W's original no.	90,70,000078550
<ul style="list-style-type: none">• Air-cooled DynaGrate• Water-cooled DynaGrate	B&W's SAP no.	5000007435
	Weight each	0.2 kg
Installation place	Model no.	601.814
<ul style="list-style-type: none">• On the barrel bolt and lower T-plate.		



Lock plate

Grate type	B&W's original no.	90,70,000079310
<ul style="list-style-type: none">• Air-cooled DynaGrate• Water-cooled DynaGrate	B&W's SAP no.	5000003206
	Weight each	0.2 kg
Installation place	Model no.	600.126
<ul style="list-style-type: none">• On the pin and cylinder bracket.		



Lock plate at carb bearing

Grate type	B&W's original no.	90,70,000079311
<ul style="list-style-type: none">• Air-cooled DynaGrate• Water-cooled DynaGrate	B&W's SAP no.	5000003207
	Weight each	0.2 kg
Installation place	Model no.	601.846
<ul style="list-style-type: none">• On the cylinder bracket by the carb bearing.		



Strategic parts for DynaGrate®

Round steel bar for end piece

Grate type	B&W's original no.	90,70,000079481
<ul style="list-style-type: none">• Air-cooled DynaGrate• Water-cooled DynaGrate	B&W's SAP no.	5000004552
	Weight each	0.1 kg
Installation place	Model no.	600.179
<ul style="list-style-type: none">• Holds the cover plate and bolt together.		



Fitting for barrel bolt for lower T-plate

Grate type	B&W's original no.	90,70,000078560
<ul style="list-style-type: none">• Air-cooled DynaGrate• Water-cooled DynaGrate	B&W's SAP no.	5000006984
	Weight each	0.4 kg
Installation place	Model no.	601.862
<ul style="list-style-type: none">• On fixed bearing support.		



Disc spring cover Ø110/Ø165 mm

Grate type	B&W's original no.	90,70,000071340
<ul style="list-style-type: none">• Air-cooled DynaGrate• Water-cooled DynaGrate	B&W's SAP no.	5000006598
	Weight each	0.1 kg
Installation place	Model no.	601.842
<ul style="list-style-type: none">• At the base of the shafts. It holds the disc spring in place.		



Sealing bushing

Grate type	B&W's original no.	90,70,000072200
<ul style="list-style-type: none">• Air-cooled DynaGrate• Water-cooled DynaGrate	B&W's SAP no.	5000003544
	Weight each	0,1 kg
Installation place	Model no.	600.182
<ul style="list-style-type: none">• On the bolt. It fixates the bolt on the grate side.		



Clamp fitting

Grate type	B&W's original no.	90,70,000079478
<ul style="list-style-type: none">• Air-cooled DynaGrate• Water-cooled DynaGrate	B&W's SAP no.	5200009003
	Weight each	0.2 kg
Installation place	Model no.	601.822
<ul style="list-style-type: none">• On the back of the lower T-plate.		



Strategic parts for DynaGrate®

Spacer for cylinder Ø50x14.5 mm

Grate type	B&W's original no. 90,70,000071520
<ul style="list-style-type: none">• Air-cooled DynaGrate• Water-cooled DynaGrate	B&W's SAP no. 5000001704
	Weight each 0.1 kg
Installation place	Model no. 601.829
<ul style="list-style-type: none">• On both sides of the cylinder for the tension rod.	



Spacer for synchronous joint Ø45x8.4 mm

Grate type	B&W's original no. 90,70,000071501
<ul style="list-style-type: none">• Air-cooled DynaGrate• Water-cooled DynaGrate	B&W's SAP no. 5000001706
	Weight each 0.1 kg
Installation place	Model no. 601.847
<ul style="list-style-type: none">• On the synchronous joint and the synchronous arm.	



Spacer for synchronous joint Ø34x9 mm

Grate type	B&W's original no. 90,70,000071500
<ul style="list-style-type: none">• Air-cooled DynaGrate• Water-cooled DynaGrate	B&W's SAP no. 5000001705
	Weight each 0.1 kg
Installation place	Model no. 601.811
<ul style="list-style-type: none">• On the synchronous joint and the synchronous arm.	



Spacer

Grate type	B&W's original no. 90,70,000072258
<ul style="list-style-type: none">• Air-cooled DynaGrate• Water-cooled DynaGrate	B&W's SAP no. 5200010232
	Weight each 0.1 kg
Installation place	Model no. 601.850
<ul style="list-style-type: none">• On the lower T-plate.	



T-plate, first, middle section

Grate type	B&W's original no. 90,10,000016118
<ul style="list-style-type: none">• Water-cooled DynaGrate	B&W's SAP no. 5000006502
	Weight each 47.8 kg
Installation place	Model no. 602.755
<ul style="list-style-type: none">• On the inside of the grate sections.	



Strategic parts for DynaGrate®

T-plate, last, middle section

Grate type	B&W's original no.	90,10,000016128
<ul style="list-style-type: none"> Water-cooled DynaGrate 	B&W's SAP no.	5000006505
Installation place	Weight each	26.8 kg
<ul style="list-style-type: none"> On the inside of the grate sections. 	Model no.	602.756



T-plate, middle section

Grate type	B&W's original no.	90,10,000016238
<ul style="list-style-type: none"> Water-cooled DynaGrate 	B&W's SAP no.	5000006503
Installation place	Weight each	56.0 kg
<ul style="list-style-type: none"> On the inside of the grate sections. 	Model no.	602.744



First T-plate, middle section

Grate type	B&W's original no.	90,10,000016117
<ul style="list-style-type: none"> Air-cooled DynaGrate 	B&W's SAP no.	5200011374
Installation place	Weight each	43.0 kg
<ul style="list-style-type: none"> On the inside of the grate sections. 	Model no.	0670220



Last T-plate, middle section

Grate type	B&W's original no.	90,10,000016127
<ul style="list-style-type: none"> Air-cooled DynaGrate 	B&W's SAP no.	5200012711
Installation place	Weight each	78.2 kg
<ul style="list-style-type: none"> On the inside of the grate sections. 	Model no.	0741006



T-plate, middle section

Grate type	B&W's original no.	90,10,000016237
<ul style="list-style-type: none"> Air-cooled DynaGrate 	B&W's SAP no.	5200011375
Installation place	Weight each	52.0 kg
<ul style="list-style-type: none"> On the inside of the grate sections. 	Model no.	0670239



Strategic parts for DynaGrate®

Mantle, middle section

Grate type	B&W's original no.	90,10,000016508
• Water-cooled DynaGrate	B&W's SAP no.	5000002777
Installation place	Weight each	104.0 kg
• On the inside of the grate sections.	Model no.	690.066



Last mantle, middle section

Grate type	B&W's original no.	90,10,000016527
• Air-cooled DynaGrate	B&W's SAP no.	5200012712
Installation place	Weight each	142.3 kg
• On the inside of the grate sections.	Model no.	0741221



First mantle, middle section

Grate type	B&W's original no.	90,10,000016518
• Water-cooled DynaGrate	B&W's SAP no.	5000002775
Installation place	Weight each	77.0 kg
• On the inside of the grate sections.	Model no.	690.070



Last mantle, middle section

Grate type	B&W's original no.	90,10,000016528
• Water-cooled DynaGrate	B&W's SAP no.	5000002776
Installation place	Weight each	65.5 kg
• On the inside of the grate sections.	Model no.	690.073



Mantle, middle section

Grate type	B&W's original no.	90,10,000016507
• Air-cooled DynaGrate	B&W's SAP no.	5200011372
Installation place	Weight each	97.0 kg
• On the inside of the grate sections.	Model no.	0661246



Strategic parts for DynaGrate®

First mantle, middle section

Grate type	B&W's original no.	90,10,000016517
<ul style="list-style-type: none">• Air-cooled DynaGrate	B&W's SAP no.	5200011373
Installation place	Weight each	78.6 kg
<ul style="list-style-type: none">• On the inside of the grate sections.	Model no.	0670248



Bearing cover

Grate type	B&W's original no.	90,20,000022048
<ul style="list-style-type: none">• Air-cooled DynaGrate• Water-cooled DynaGrate	B&W's SAP no.	5200007465
Installation place	Weight each	3.0 kg
<ul style="list-style-type: none">• On the end of the shaft extension holding the bearing in place.	Model no.	601.228



Bearing flange

Grate type	B&W's original no.	90,20,000022008
<ul style="list-style-type: none">• Air-cooled DynaGrate	B&W's SAP no.	5200007466
Installation place	Weight each	0.8 kg
<ul style="list-style-type: none">• On the end of the shaft extension.	Model no.	601.800



Sealing flange Ø110 mm

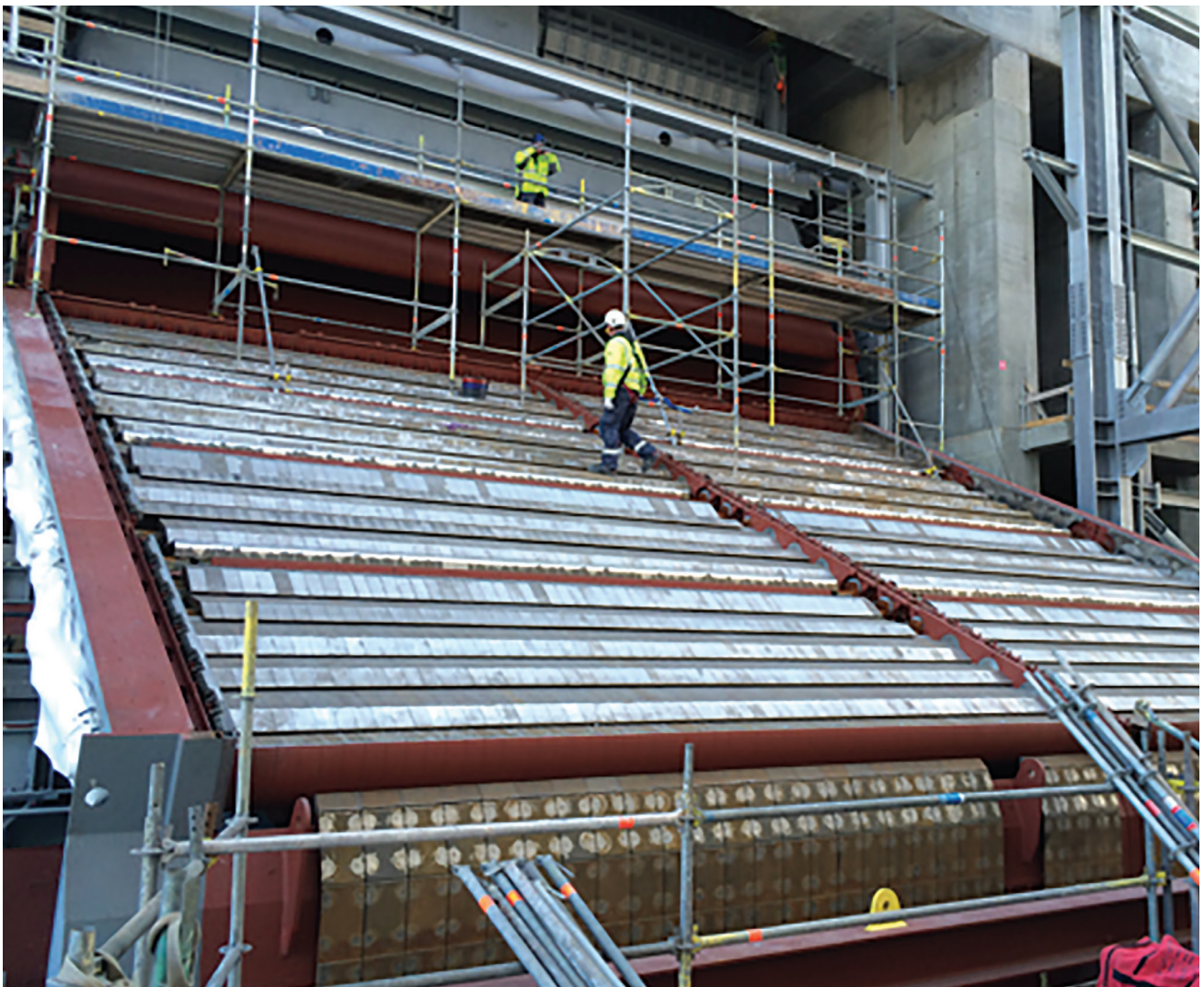
Grate type	B&W's original no.	90,20,000022024
<ul style="list-style-type: none">• Air-cooled DynaGrate• Water-cooled DynaGrate	B&W's SAP no.	5200007464
Installation place	Weight each	5.4 kg
<ul style="list-style-type: none">• On the bearing housing.	Model no.	601.234



Guide bearing housing

Grate type	B&W's original no.	90,20,000022201
<ul style="list-style-type: none">• Air-cooled DynaGrate• Water-cooled DynaGrate	B&W's SAP no.	5000006244
Installation place	Weight each	10.2 kg
<ul style="list-style-type: none">• On the shafts.	Model no.	602.733





Babcock & Wilcox Renewable Service A/S

Energivej 16
DK-6670 Holsted
Denmark
Phone: +45 72 40 74 65

www.babcock.com



The information contained herein is provided for general information purposes only and is not intended nor to be construed as a warranty, an offer, or any representation of contractual or other legal responsibility.

DynaGrate and *Vølund* are trademarks of The Babcock & Wilcox Company or its affiliates.



Established in 1867, Babcock & Wilcox is a global leader in renewable, environmental and thermal technologies and services for power and industrial applications.

For more information or to contact us, visit our website at www.babcock.com.